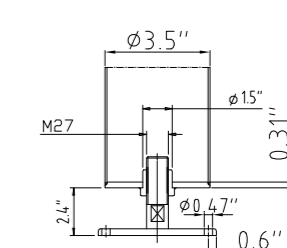
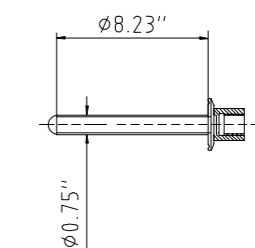


Design data		
Vessel category		Normal pressure
Description of parameter	Vessel	Jacket
Working pressure	psi	22
Design pressure	psi	22
Level testing pressure	psi	45
Medium	Beer	Glycol
Material	SUS 304	SUS 304
Working temperature	°F 15 to 100	
Design temperature	°F 15 to 100	
Gross volume	BBL	4.3
Net volume	BBL	3.5
Heat exchanger area	m2	1.2
Glycol Jacket Max Volume	Gallon	1.6
Insulation material	Chloride Free Polyurethane	
Insulation thickness	mm	80
Total Tank Weight Empty	lbs	840
Total Tank Weight Full	lbs	2640



CONNECTIONS				
MARK	DN	DESCRIPTION	CONNECT SIZE	REMARKS
A	2"	PVRV FERRULE	2"	ISO
B	3"	PORT	3"	ISO
C	15"	CIP APM FERRULE	15"	ISO
D	15"	TEMPERATURE CONN	15"	ISO
E	15"	CO2 INLET	15"	ISO
F	15"	TEM-GAGE	15"	ISO
G	15"	SAMPLE FERRULE	15"	ISO
H	15"	DIAIN ARM COUPLING	15"	ISO
I	3/4"	DIAIN ARM COUPLING	3/4"	ISO
J	2"	OUTLET	2"	ISO
k	DIN63-15"	DRAIN FERRULE	DIN63-15"	ISO
l	3/4"	COOLING OUTLET	3/4"	NPT
m	3/4"	COOLING INLET	3/4"	NPT
N	4"	HOP PORT	4"	ISO
R	13.7"	MANWAY	13.7"	ISO



05/19/2022
3.5BBL LAGERING TANK