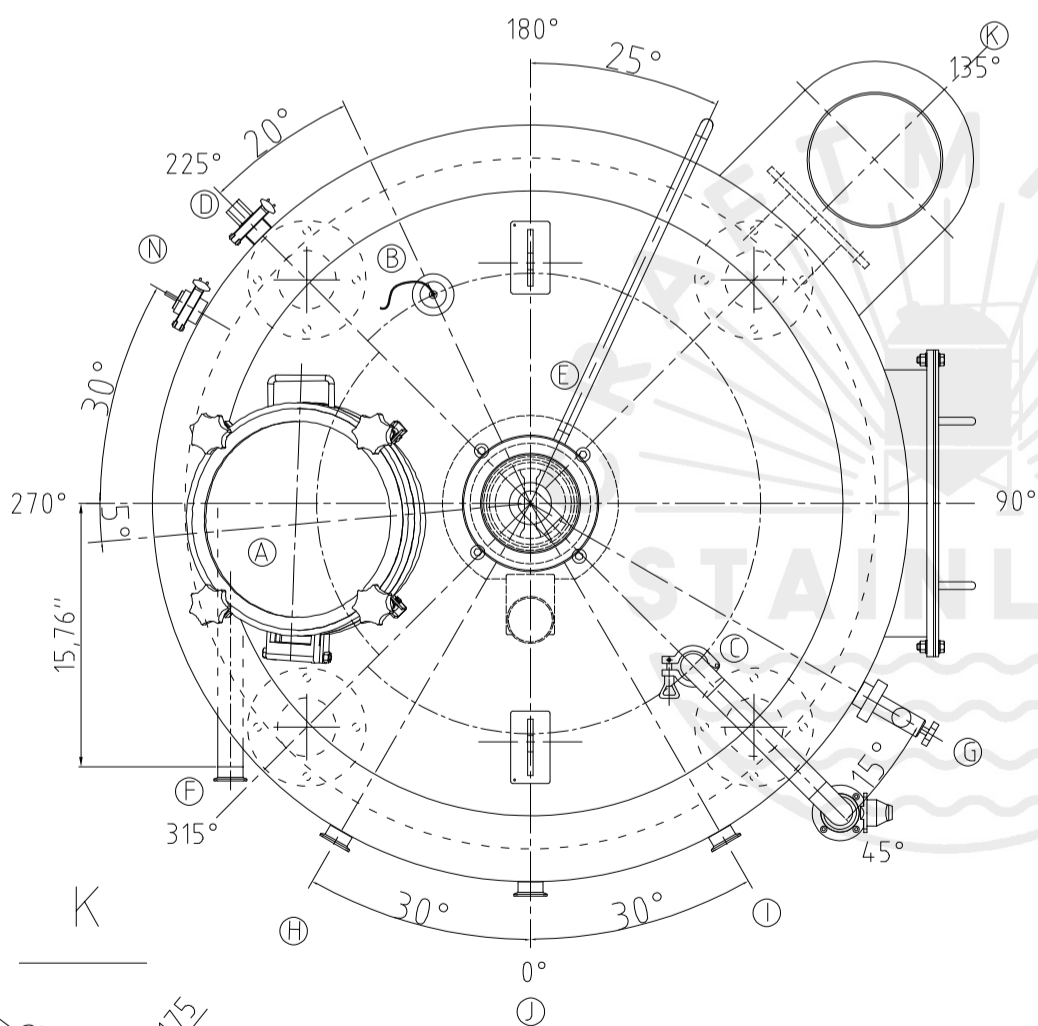
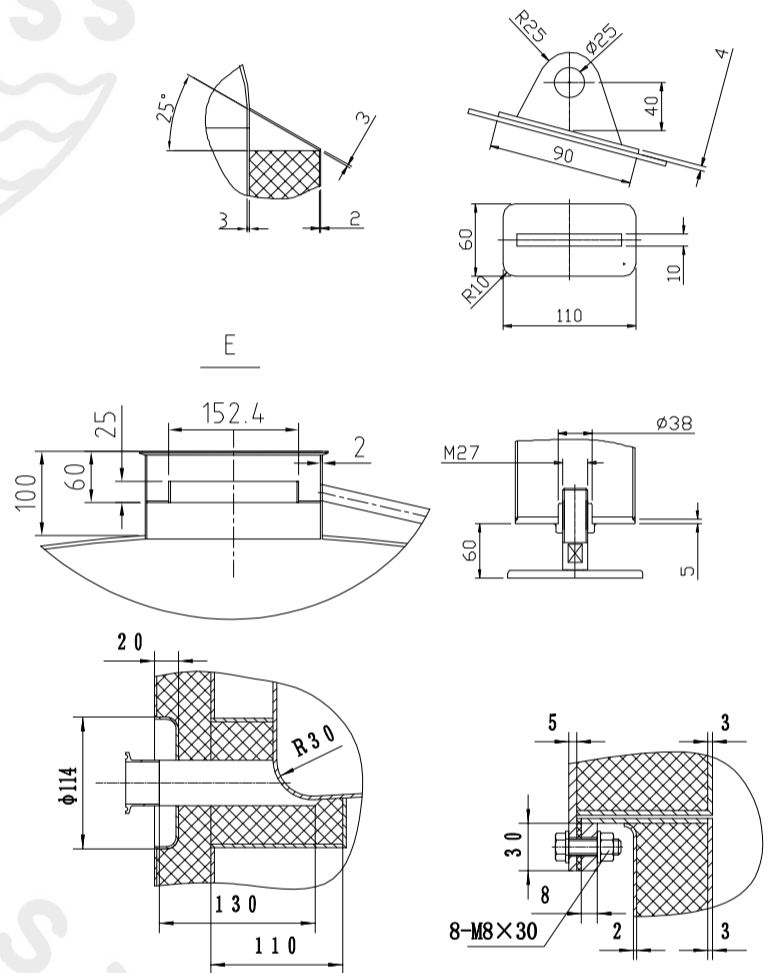
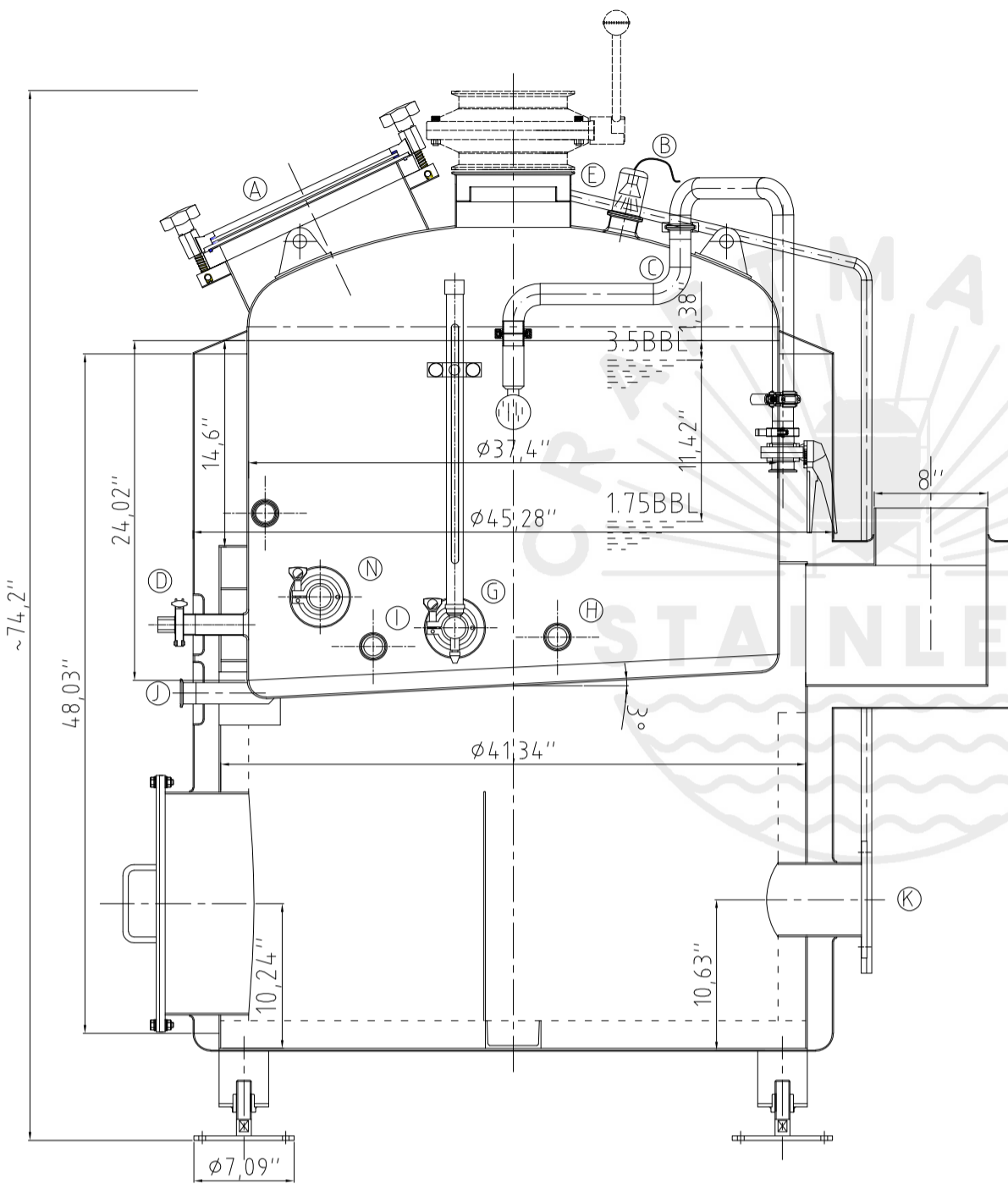


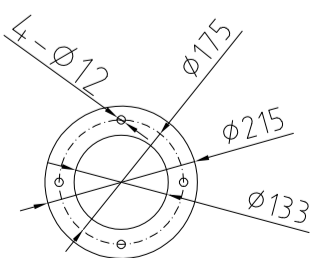
Design data

Vessel category	Normal pressure	
Description of parameter	Vessel	
Working pressure	psi	ATMP
Design pressure	psi	ATMP
Level testing pressure	psi	ATMP
Medium	Malt	
Material	SUS 304	
Working temperature	°F	15 to 250
Design temperature	°F	15 to 250
Gross volume	BBL	4.58
Net volume	BBL	3.5
Heat exchanger area	m2	-----
Glycol Jacket Max Volume	Gallon	-----
Insulation material	Rock wool	
Insulation thickness	mm	100
Total Tank Weight Empty	lbs	620
Total Tank Weight Full	lbs	1520



CONNECTIONS

MARK	DN	DESCRIPTION	CONNECT SIZE	REMARKS
A	ø14"	Manway	ø350	ISO
B	2"	Light	ø50.8x15	ISO
C	1.5"	CIP APM FERRULE	ø38.1x15	ISO
D	1.5"	TEMPERATURE CONN	ø38.1x15	NPT
E	8"	EXHAUST CAP	ø203.2x3	ISO
F	1.5"	Roundabout	ø38.1x15	ISO
G	1.5"	LEVEL GAGE	ø38.1x15	ISO
H	1.5"	INLET	ø38.1x15	ISO
I	1.5"	OUTLET	ø38.1x15	ISO
J	1.5"	OUTLET	ø38.1x15	ISO
K	ø5.2"	Burner flange	ø133	ISO
N	1.5"	Anti Dry Burning Sensor	ø38.1x15	ISO



02/28/2022

3.5BBL KW(FIRED)