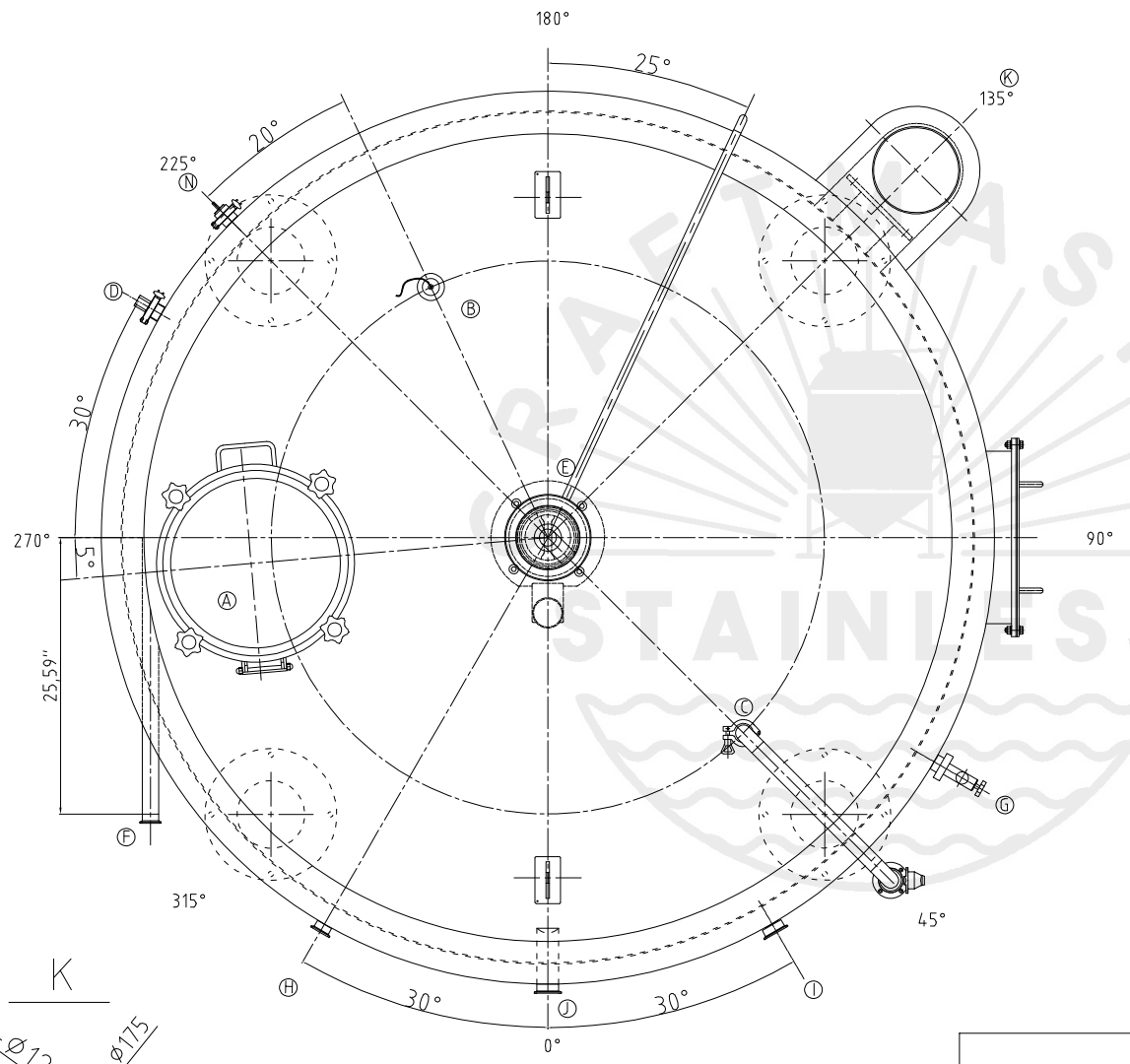
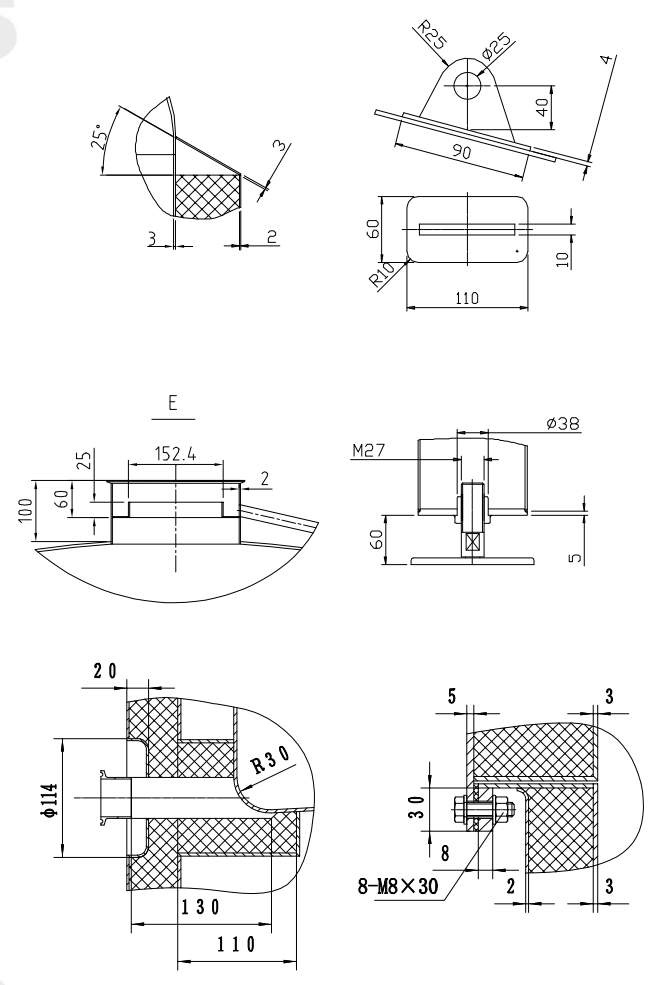
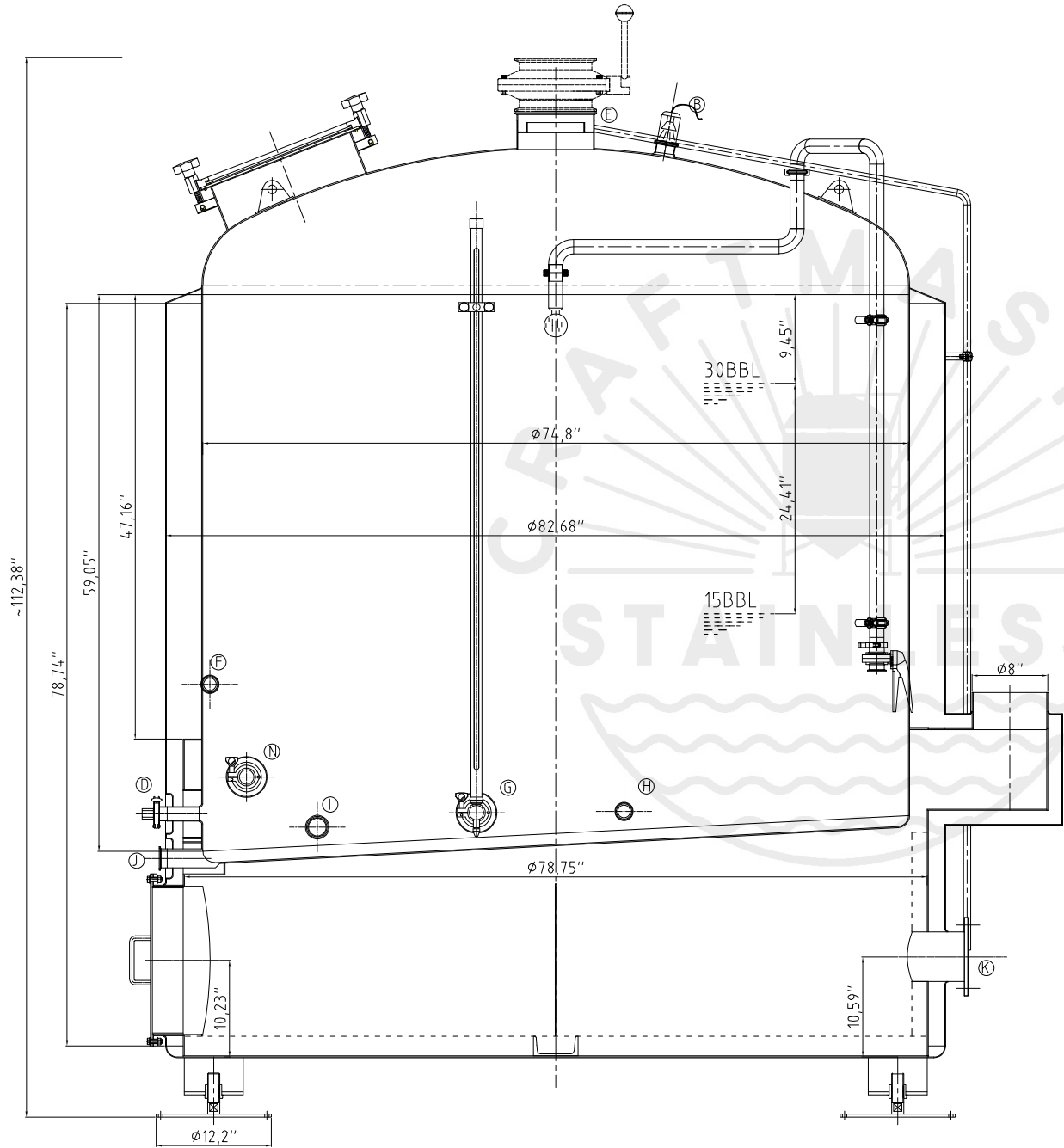


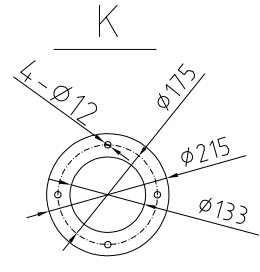
### Design data

Vessel category	Normal pressure	
Description of parameter	Vessel	
Working pressure	psi	ATMP
Design pressure	psi	ATMP
Level testing pressure	psi	ATMP
Medium	Malt	
Material	SUS 304	
Working temperature	°F	15 to 250
Design temperature	°F	15 to 250
Gross volume	BBL	42.1
Net volume	BBL	30
Heat exchanger area	m2	-----
Glycol Jacket Max Volume	Gallon	-----
Insulation material	Rock wool	
Insulation thickness	mm	100
Total Tank Weight Empty	lbs	2820
Total Tank Weight Full	lbs	10575



### CONNECTIONS

MARK	DN	DESCRIPTION	CONNECT SIZE	REMARKS
A	ø15.7"	Manway	ø400	ISO
B	DN80	Light	DN80~ø114	ISO
C	1.5"	CIP APM FERRULE	ø38.1x1.5	ISO
D	1.5"	TEMPERATURE CONN	ø38.1x1.5	NPT
E	8"	EXHAUST CAP	ø203.2x3	ISO
F	1.5"	Roundabout	ø38.1x1.5	ISO
G	1.5"	LEVEL GAGE	ø38.1x1.5	ISO
H	1.5"	INLET	ø38.1x1.5	ISO
I	2"	OUTLET	ø50.8x1.5	ISO
J	2"	OUTLET	ø50.8x1.5	ISO
K	ø5.2"	Burner flange	ø133	ISO
N	1.5"	Anti Dry Burning Sensor	ø38.1x1.5	ISO



02/28/2022

30BBL KW(FIRED)