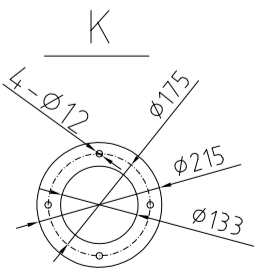
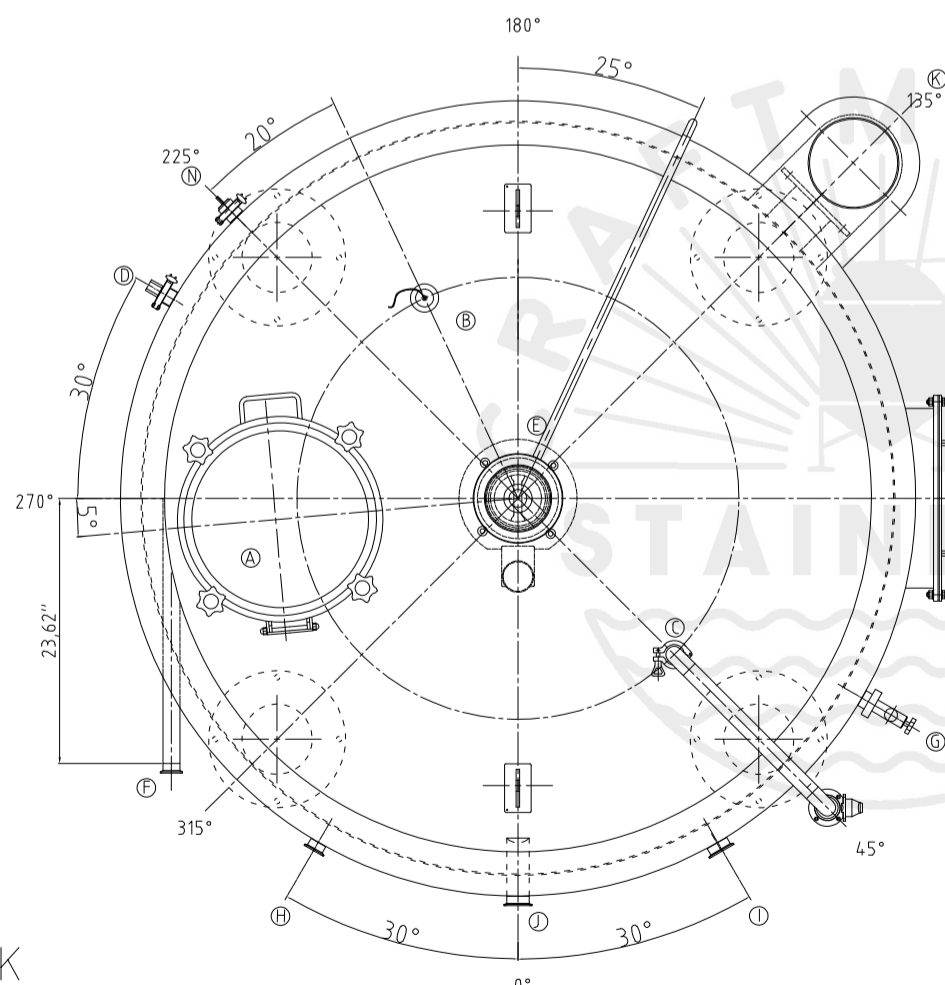
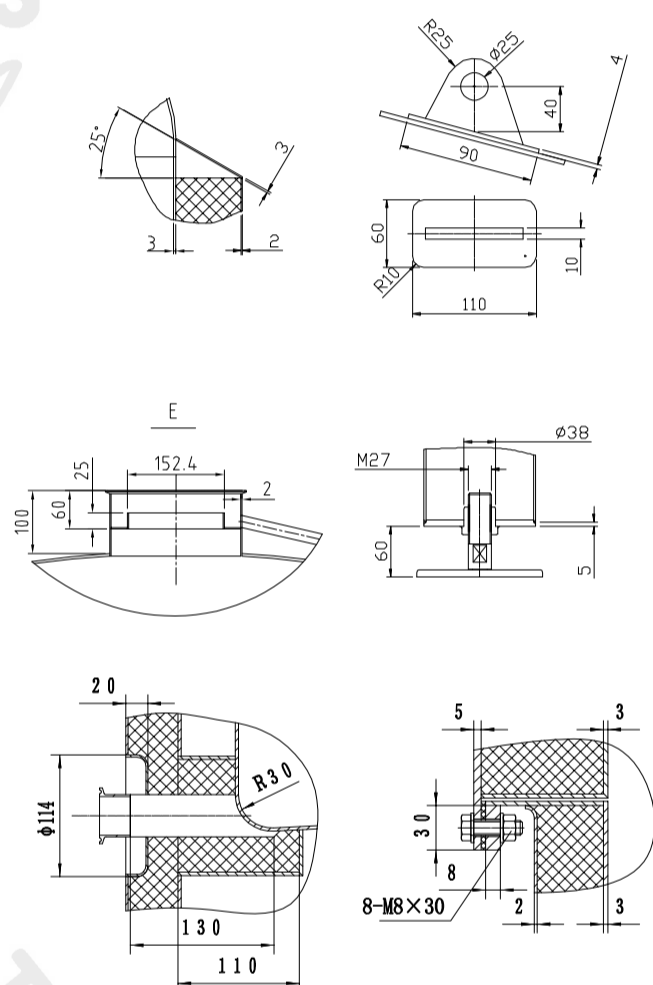
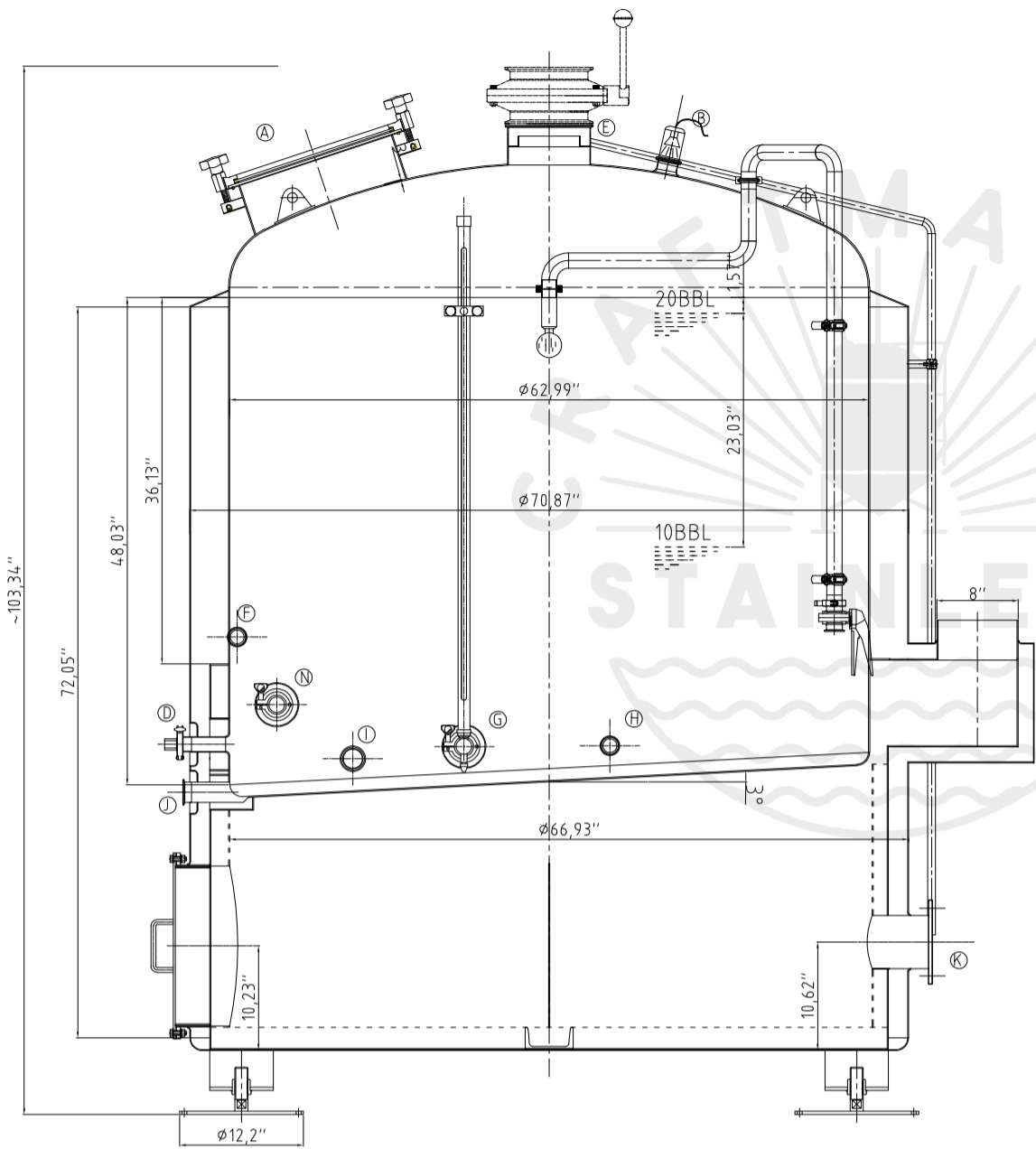


### Design data

Vessel category	Normal pressure
Description of parameter	Vessel
Working pressure	psi ATMP
Design pressure	psi ATMP
Level testing pressure	psi ATMP
Medium	Malt
Material	SUS 304
Working temperature	°F 15 to 250
Design temperature	°F 15 to 250
Gross volume	BBL 24.58
Net volume	BBL 20
Heat exchanger area	m2 -----
Glycol Jacket Max Volume	Gallon -----
Insulation material	Rock wool
Insulation thickness	mm 100
Total Tank Weight Empty	lbs 2130
Total Tank Weight Full	lbs 7300



### CONNECTIONS

MARK	DN	DESCRIPTION	CONNECT SIZE	REMARKS
A	φ15.7"	Manway	φ400	ISO
B	DN80	Light	DN80~φ114	ISO
C	1.5"	CIP APM FERRULE	φ38.1x1.5	ISO
D	1.5"	TEMPERATURE CONN	φ38.1x1.5	NPT
E	8"	EXHAUST CAP	φ203.2x3	ISO
F	1.5"	Roundabout	φ38.1x1.5	ISO
G	1.5"	LEVEL GAGE	φ38.1x1.5	ISO
H	1.5"	INLET	φ38.1x1.5	ISO
I	2"	OUTLET	φ50.8x1.5	ISO
J	2"	OUTLET	φ50.8x1.5	ISO
K	φ5.2"	Burner flange	φ133	ISO
N	1.5"	Anti Dry Burning Sensor	φ38.1x1.5	ISO



02/28/2022

20BBL KW(FIRED)