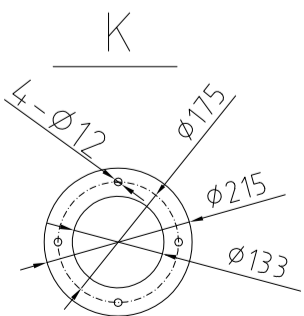
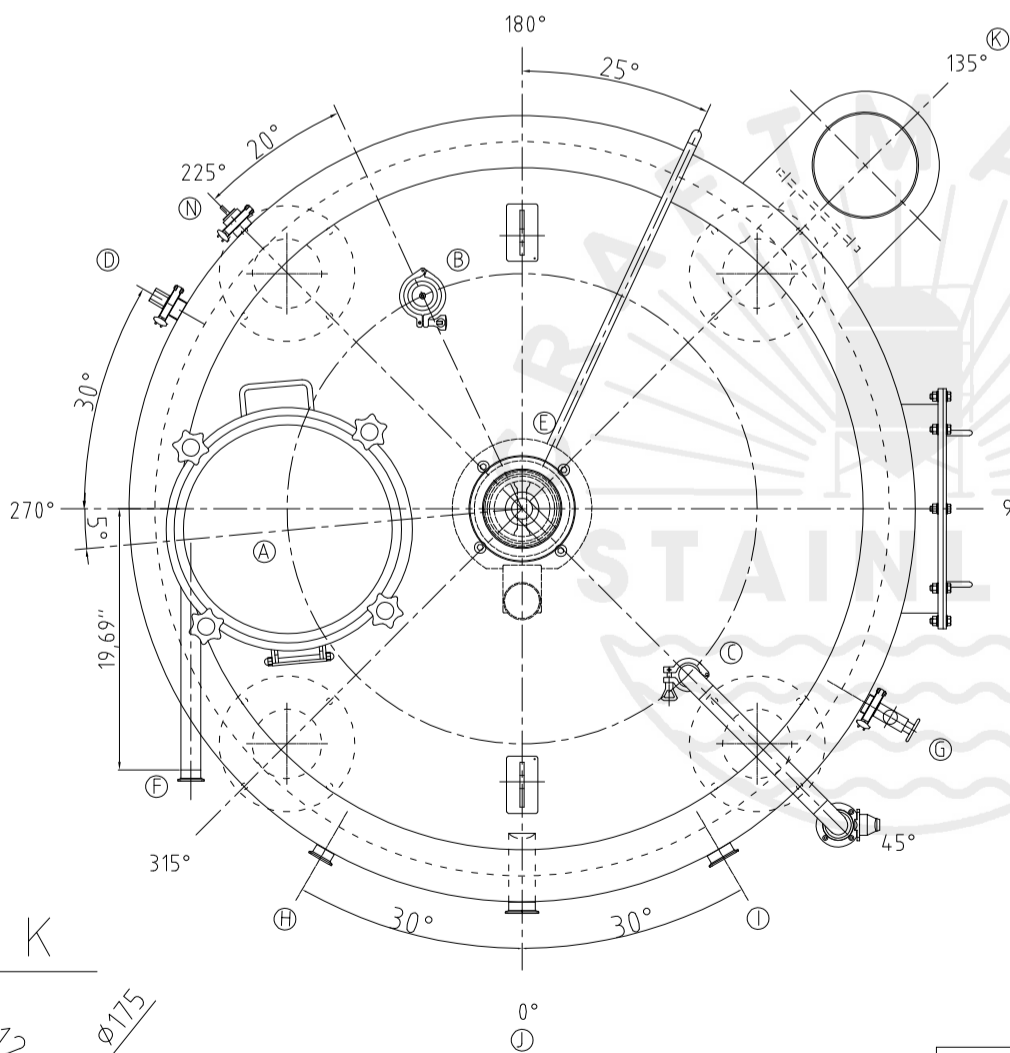
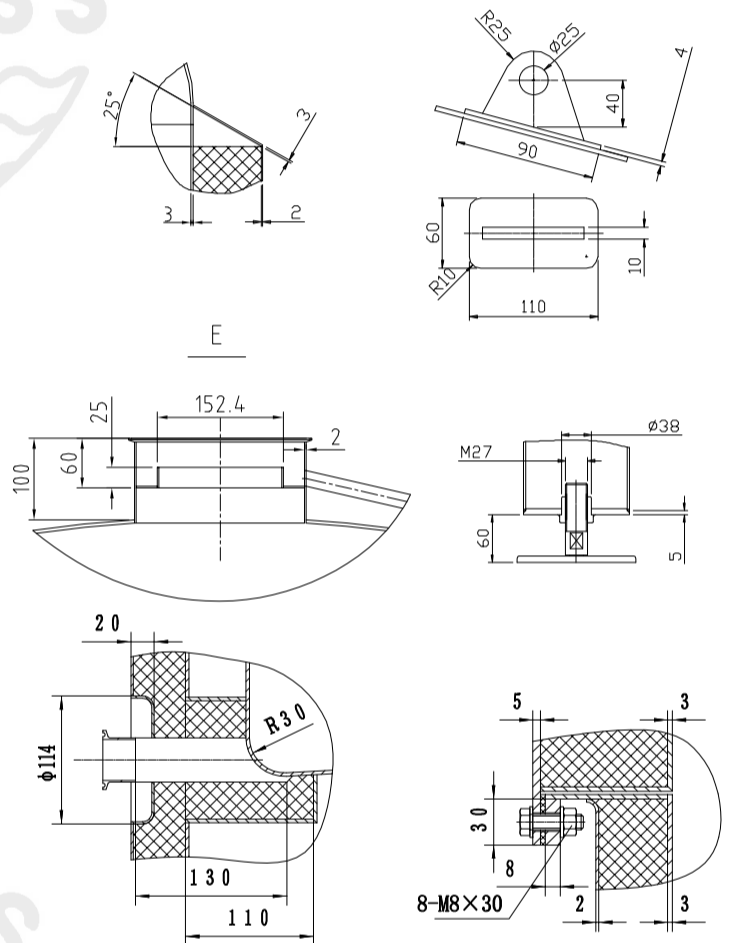
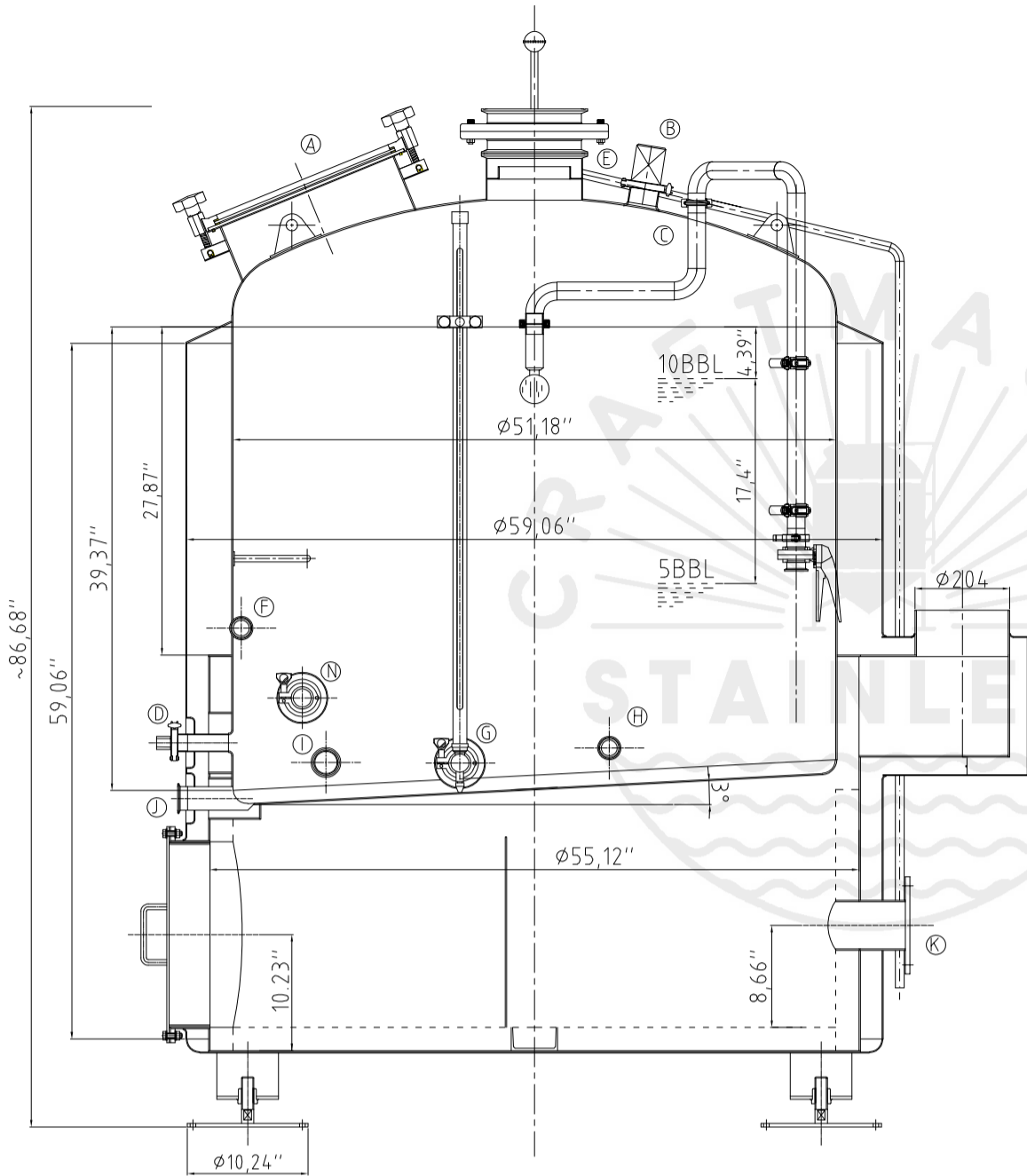


### Design data

Vessel category	Normal pressure
Description of parameter	Vessel
Working pressure	psi
Design pressure	psi
Level testing pressure	psi
Medium	Malt
Material	SUS 304
Working temperature	°F
Design temperature	°F
Gross volume	BBL
Net volume	BBL
Heat exchanger area	m2
Glycol Jacket Max Volume	Gallon
Insulation material	Rock wool
Insulation thickness	mm
Total Tank Weight Empty	lbs
Total Tank Weight Full	lbs



### CONNECTIONS

MARK	DN	DESCRIPTION	CONNECT SIZE	REMARKS
A	Ø14"	Manway	Ø350	ISO
B	2"	Light	Ø50.8x15	ISO
C	1.5"	CIP APM FERRULE	Ø38.1x15	ISO
D	1.5"	TEMPERATURE CONN	Ø38.1x15	NPT
E	8"	EXHAUST CAP	Ø203.2x3	ISO
F	1.5"	Roundabout	Ø38.1x15	ISO
G	1.5"	LEVEL GAGE	Ø38.1x15	ISO
H	1.5"	INLET	Ø38.1x15	ISO
I	2"	OUTLET	Ø50.8x15	ISO
J	2"	OUTLET	Ø50.8x15	ISO
K	Ø5.2"	Burner flange	Ø133	ISO
N	1.5"	Anti Dry Burning Sensor	Ø38.1x15	ISO



02/28/2022

10BBL KW  
(DIRECT FIRE)